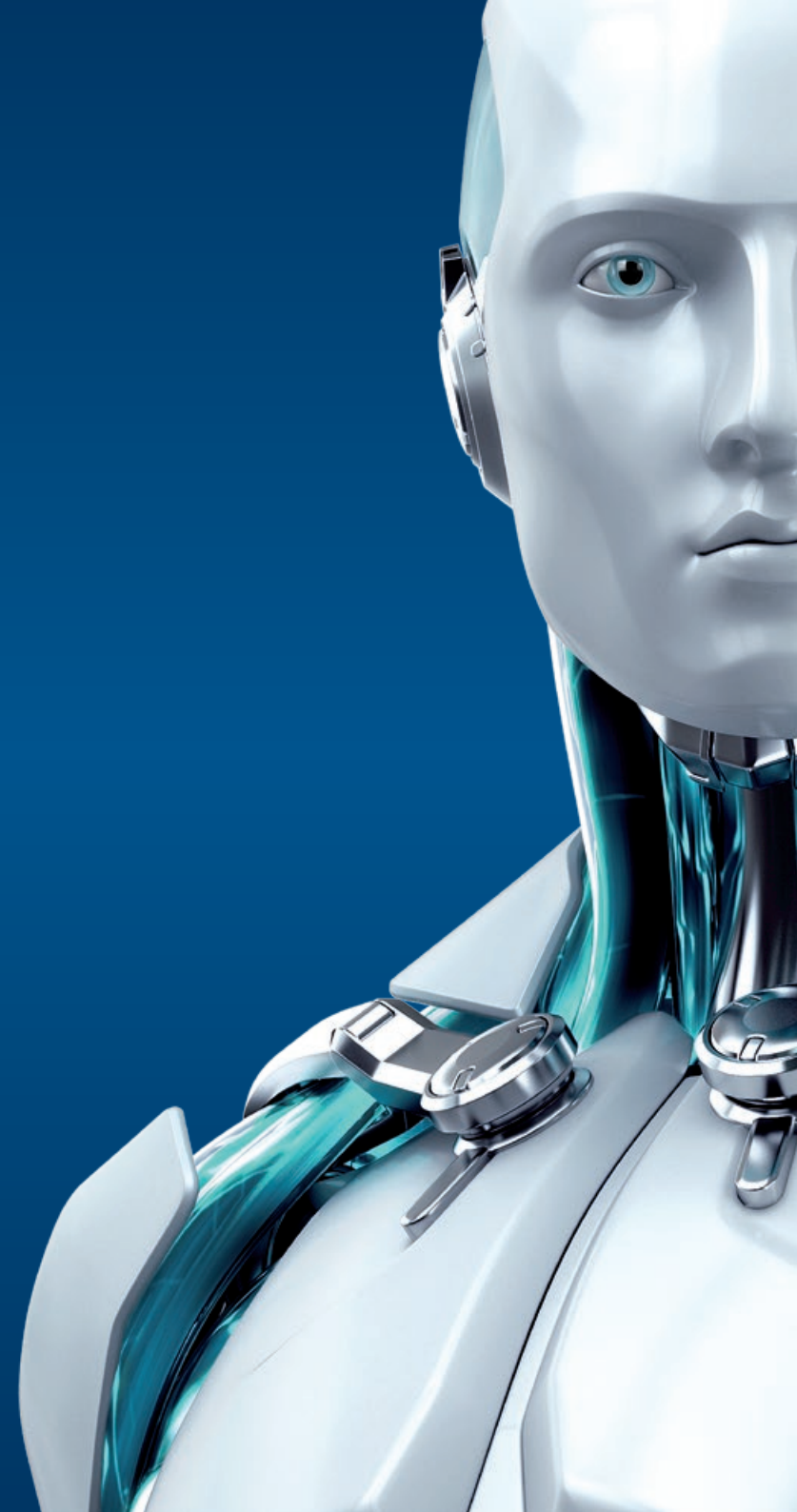




# MSP PROGRAM

ESET Remote Administrator Plug-in for LabTech

ENJOY SAFER TECHNOLOGY™



## LabTech Remote Monitoring and Management (RMM) platform, LabTech Control Center

is widely used to manage a variety of IT services including antimalware and endpoint security. ESET offers a solution for delivering best-in-class malware protection through the LabTech environment.

**The ESET Remote Administrator Plug-in for LabTech** integrates with the LabTech Control Center to provide central management of ESET Endpoint Solutions across distributed networks. Controlling ESET's powerful, proactive malware detection using LabTech's familiar console delivers ease of endpoint deployment, on-going administration and a common interface for configuring and reporting.

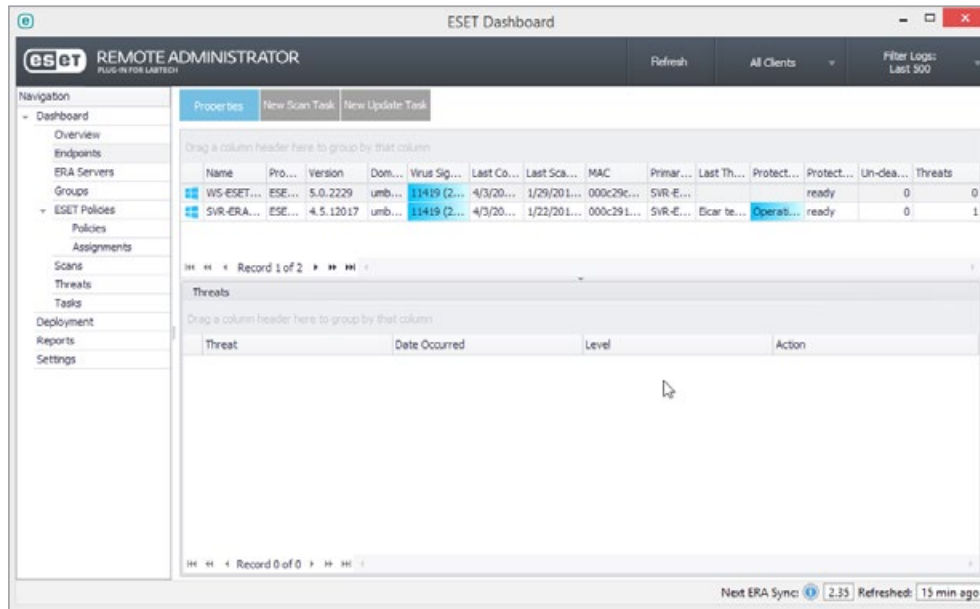
## Benefits

<b>Comprehensive endpoint security</b>	Offer best-of-breed antimalware options to your network of managed clients. Replace existing solutions with ESET's lightweight clients for low system resource usage and proactive detection of multiple threat vectors using advanced malware detection technologies.
<b>Ease of management</b>	The familiar LabTech console provides ease of management and adoption of ESET solutions without requiring a second console.
<b>Satisfied end users</b>	Real-time monitoring and remediation helps resolve security issues quicker and makes for confident helpdesk techs and satisfied end users.

## Features

<b>Manage client endpoint security</b>	Initiate on-demand endpoint scans and virus signature database updates.
<b>Manage client configurations</b>	Set ESET-specific configuration policies on Windows®, Mac® or Linux™ clients. Create new policies or upload existing profiles. Manage every available ESET configuration option including Spam, Firewall, HIPS, Device Control and Web Control modules.
<b>Monitor threats</b>	View and sort threat data, see which client workstations have detected threats, the time of detection, the name of the threat and any actions taken.
<b>Dashboards</b>	At-a-glance views into scanner status, system health, virus definition date, time of last threat, last threat type, and action taken.
<b>Reporting</b>	Export a report from the ESET Plug-in for LabTech to view various data about client systems such as log details for scans, tasks, and threats, license utilization, and unprotected systems. Uses Labtech sorting/filtering/grouping model.
<b>Alert management</b>	Configure email notifications that are automatically sent out when an endpoint has failed to update in a given period of time, is not communicating with the server, or other issues.

**Easily manage** ESET endpoints through familiar LabTech console.



## System requirements

**ESET Remote Administrator 6.2+  
ESET Remote Administrator 5.2.x**

### ESET Business Product Licenses

Active licenses of any of the following ESET endpoint products:

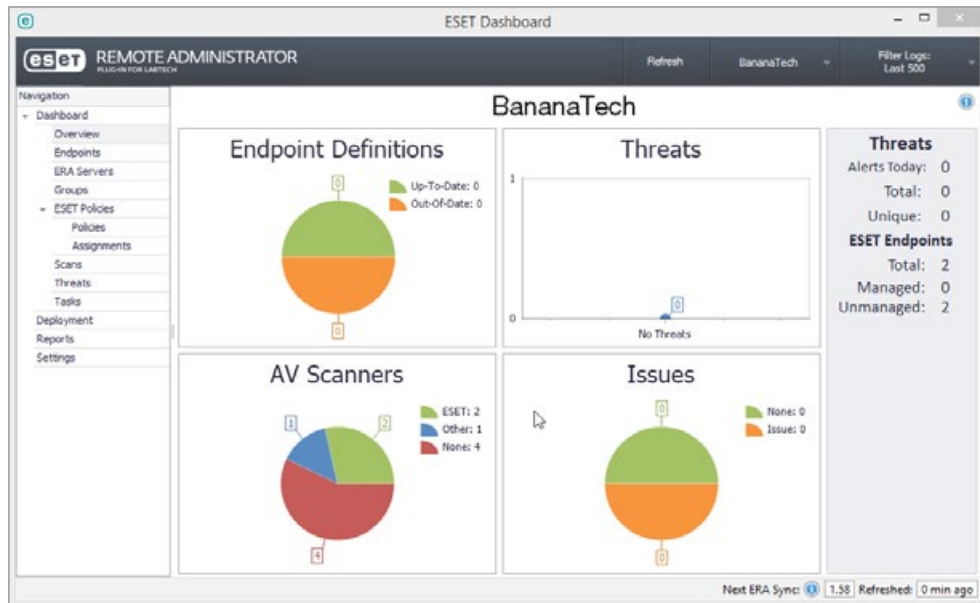
- ESET Endpoint Antivirus for Windows
- ESET Endpoint Security for Windows
- ESET NOD32 Antivirus Business Edition for OS X
- ESET Smart Security Business Edition for OS X
- ESET NOD32 Antivirus Business Edition for Linux Desktop

Also can be used to manage and monitor select ESET Window or Linux File Server products

**LabTech Control Center (2013 or newer)\***

\*To review LabTech system requirements, please visit LabTech's website.

**Customize your dashboard** view to display threat data in easy to read graphs and charts.





[www.eset.com](http://www.eset.com)

Copyright © 1992 – 2015 ESET, spol. s r. o. ESET, ESET logo, ESET android figure, NOD32, ESET Smart Security, SysInspector, ThreatSense, ThreatSense.Net, LiveGrid, LiveGrid logo and/or other mentioned products of ESET, spol. s r. o., are registered trademarks of ESET, spol. s r. o. Windows® is a trademark of the Microsoft group of companies. Other here mentioned companies or products might be registered trademarks of their proprietors. Produced according to quality standards of ISO 9001:2008.

Contact information: