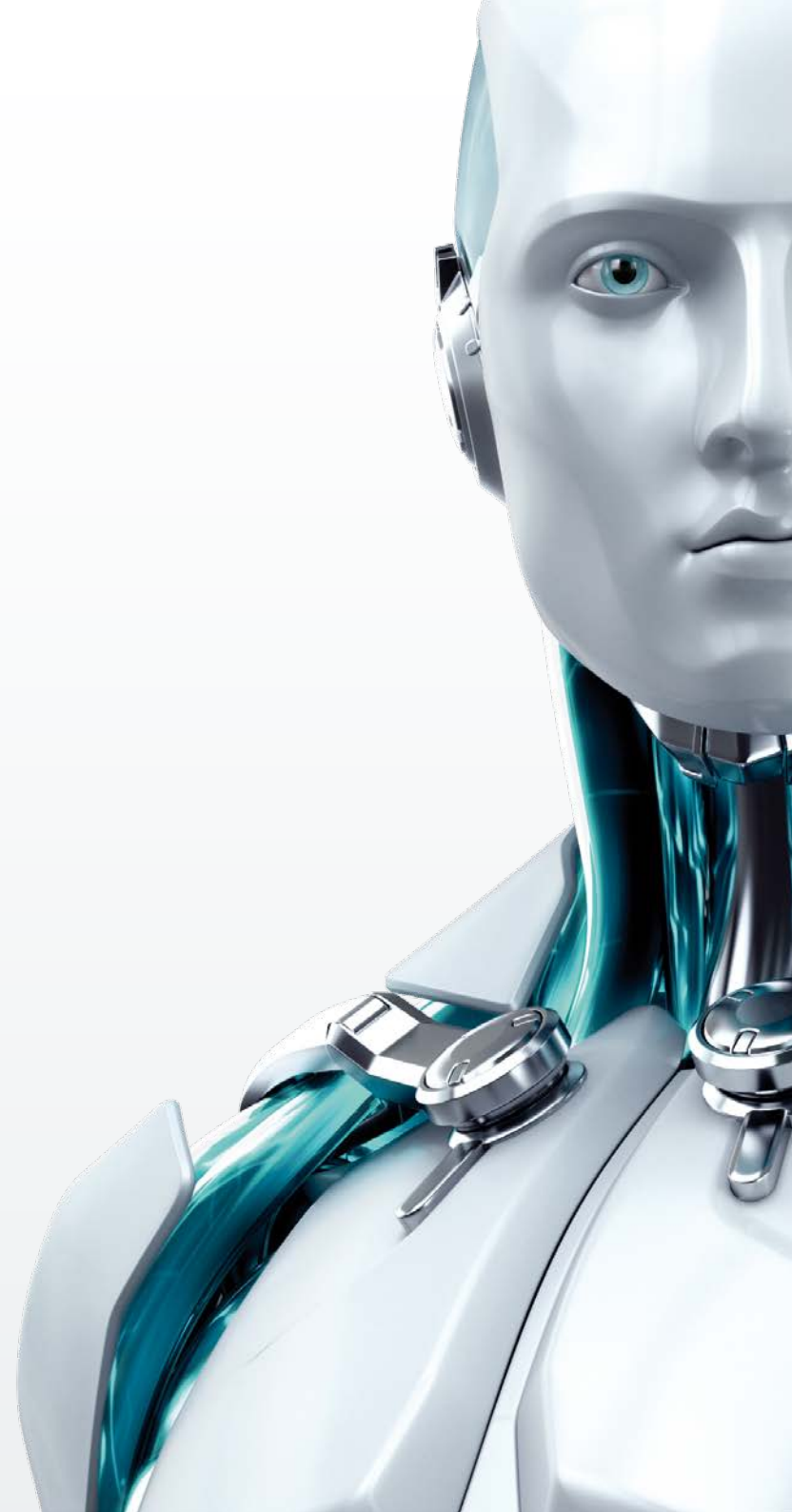


# ESET **SECURE BUSINESS**

For Businesses with more than 25 seats



[www.eset.com](http://www.eset.com)



Whether your business is just starting or established, there are a few things you expect from security software you use daily. At ESET, we feel that running security software in the business environment should be easy and simple. That's why we have created ESET Business Solutions, a perfect match for any size business – utilizing our 25 years experience pioneering the antivirus industry.

**Simple and Straightforward**

With ESET Business Solutions you can mix and match endpoint protection according to your actual needs, deploying it on a range of platforms (Windows, Mac, and Linux) and devices: computers, smartphones, tablets, and servers.

**Light on Your System**

Our solutions are built for small footprint, which also makes them suitable for older hardware, saving IT-related costs on hardware upgrades. In addition, program updates are small and can download from a central mirror server.

**Easy to Manage**

Easily deploy, configure and manage your security software from a single console. It no longer takes a bunch of IT professionals to run your company's IT security – but from our remote management console your company security can be tweaked to every last detail.



	Endpoint Antivirus	Mobile Security	File Security	Endpoint Security	Mail Security	Gateway Security
<b>ESET Endpoint Protection Standard</b>	Full	Full	Full	Partial	None	None
<b>ESET Endpoint Protection Advanced</b>	Full	Full	Full	Full	Partial	None
<b>ESET Secure Business</b>	Full	Full	Full	Full	Full	Partial
<b>ESET Secure Enterprise</b>	Full	Full	Full	Full	Full	Full

**ESET Endpoint Protection Standard**

Keep your network clean and protect your endpoints (computers, smartphones, tablets, and fileserver) against emerging threats. ESET Endpoint Protection Standard provides essential protection for the company network that is easily manageable from a single console.

**ESET Endpoint Protection Advanced**

In addition to ESET Endpoint Protection Standard, the Advanced version comes with the powerful Web Control, Firewall and Anti-Spam filter to provide additional layers of protection for the company network and your mobile workforce.

**ESET Secure Business**

Eliminating email-borne threats at the server level, ESET Secure Business gives your company's data an extra level of security that complements the protection of computers, mobile devices and file servers.

**ESET Secure Enterprise**

Choose this option if you operate your own Internet gateway server to safeguard your HTTP and FTP communications. In addition, ESET Secure Enterprise gives you all the products and tools for the maximum level of protection on your endpoints and servers across multiple platforms.



**ESET PREMIUM SUPPORT**

Enquire about ESET Premium Support for priority access to IT security professionals 365/24/7

# ESET SECURE BUSINESS



## ESET Endpoint Antivirus

ESET NOD32 Antivirus Business Edition for Mac OS X

ESET NOD32 Antivirus Business Edition for Linux Desktop

ESET Endpoint Security for Android

ESET Mobile Security Business Edition

ESET File Security for Microsoft Windows Server

ESET File Security for Microsoft Windows Server Core

ESET File Security for Linux / BSD / Solaris

ESET Endpoint Security

ESET Mail Security for Microsoft Exchange Server

ESET Mail Security for IBM Lotus Domino

ESET Mail Security for Linux/BSD/Solaris

ESET Security for Kerio

ESET Remote Administrator

See the following pages for benefits and features of the products that are color-coded in grey.

Product features may vary depending on operating system. Please consult the individual product pages at [www.eset.com](http://www.eset.com) for specific product features.



### Antivirus and Antispyware

Eliminates all forms of threats, including viruses, rootkits, worms and spyware, keeping your network protected online and off. ESET's cloud-powered reputation database increases scanning speed and minimizes false positives.

### Host-based Intrusion Prevention System (HIPS)

Provides tamper protection and secures the system registry, processes, applications and files from unauthorized modification. You can customize the behavior of the system down to every last detail and detect even unknown threats based on suspicious behavior.

### Device Control

Lets you block unauthorized media and devices based on pre-set rules and parameters. Set access permissions (read/write, read, block) for individual media, devices, users and groups.

### Auto-Scan of Removable Media

Automatically scans USBs, CDs, and DVDs for threats upon insertion to eliminate autorun and other removable risks. Choose from these scanning options: start automatically/notify (prompt user)/do not scan.

### Cross-platform Protection

Exchange files and email attachments among Windows, Mac and Linux endpoints with confidence that malware targeting any of these platforms will be automatically detected and eliminated. Prevent Macs from turning into carriers of malware in the company network.

### Low System Demands

Leaves more system resources for programs you use daily. Our software also runs smoothly on older hardware, saving your time and costs of having to upgrade your endpoints.

### Multiple Log Formats

Save logs in common formats - CSV, plain text, or Windows event log for immediate analysis or harvesting. Take advantage of data being readable by 3rd party SIEM tools; RSA enVision is supported directly via a plug-in.

### Update Rollback

Revert virus signature and module updates to a known good state in case of encountering system incompatibilities. Opt to freeze updates temporarily or until manually changed.

# ESET SECURE BUSINESS



ESET Endpoint Antivirus

ESET NOD32 Antivirus Business Edition for Mac OS X

ESET NOD32 Antivirus Business Edition for Linux Desktop

## ESET Endpoint Security for Android

### ESET Mobile Security Business Edition

ESET File Security for Microsoft Windows Server

ESET File Security for Microsoft Windows Server Core

ESET File Security for Linux / BSD / Solaris

ESET Endpoint Security

ESET Mail Security for Microsoft Exchange Server

ESET Mail Security for IBM Lotus Domino

ESET Mail Security for Linux/BSD/Solaris

ESET Security for Kerio

ESET Remote Administrator

See the previous and following page(s) for benefits and features of the products that are color-coded in grey.

Product features may vary depending on operating system. Please consult the individual product pages at [www.eset.com](http://www.eset.com) for specific product features.



#### Remote Lock

Locks lost or stolen devices by a remote SMS command. After locking, no unauthorized person will be able to access data stored on the device.

#### Remote Wipe

Safely deletes all contacts, messages and data on removable memory cards. Advanced cleaning procedures ensure that it is not be possible to restore wiped data (Android 2.2 and higher).

#### GPS Localization

Remotely locates the phone using a remote SMS command and tracks the phone's GPS coordinates.

#### SIM Matching

Stay in control of your company smartphones remotely, even when an unauthorized SIM card is inserted. The Admin Contacts phone numbers will receive a wealth of information about the inserted SIM, including the phone number, IMSI and IMEI codes.

#### Admin Contacts

Set up one or more Admin Contacts for your company mobile fleet to receive all the important information in the event of a loss or theft.

#### Call Blocking

Blocks calls from unknown or hidden numbers and also calls to unwanted numbers. Define a list of allowed/blocked contacts and keep your phone bills under control.

#### Uninstall Protection

One password controls it all. Only authorized persons will be able to uninstall ESET Endpoint Security for Android (version 2.2 and higher).

#### SMS/MMS Antispam

Filters out unwanted SMS/MMS messages. Allows you to define custom blacklists/whitelists or simply block all unknown numbers.

#### Real-time Protection

Protects all applications, files and memory cards with the ESET NOD32 proactive technology optimized for mobile platforms.

#### Security Audit

An on-demand security audit checks the status of all vital phone functions, including battery level, Bluetooth status, home network, disk space and running processes.

#### On-access Scanning

Advanced scanning protects company smartphones and tablets from threats attempting to access the system via Bluetooth or Wi-Fi.

#### On-demand Scanning

On-demand Scanning provides reliable scanning and cleaning of integrated memory and exchangeable media. Scanning of specific folders is also supported.

#### Remote Administration

Enables you to check the security status of your smartphone fleet, run on-demand scans, push security policies and set uninstall password. Get overview of the platforms, OS versions and other information and stay up-to-date on your smartphones' security.

#### Administrator Message

Allows administrator to push a message to the device with custom text via ESET Remote Administrator. The message priority can be set to normal, warning or critical warning.

# ESET SECURE BUSINESS



ESET Endpoint Antivirus

ESET NOD32 Antivirus Business Edition for Mac OS X

ESET NOD32 Antivirus Business Edition for Linux Desktop

ESET Endpoint Security for Android

ESET Mobile Security Business Edition

**ESET File Security for Microsoft Windows Server**

**ESET File Security for Microsoft Windows Server Core**

**ESET File Security for Linux / BSD / Solaris**

ESET Endpoint Security

ESET Mail Security for Microsoft Exchange Server

ESET Mail Security for IBM Lotus Domino

ESET Mail Security for Linux/BSD/Solaris

ESET Security for Kerio

ESET Remote Administrator

See the previous and following page(s) for benefits and features of the products that are color-coded in grey.

Product features may vary depending on operating system. Please consult the individual product pages at [www.eset.com](http://www.eset.com) for specific product features.



## Antivirus and Antispyware

Eliminates all types of threats including viruses, rootkits, worms and spyware.

Provides real-time on-access scanning of the server-stored data.

ESET Self-defense prevents malware and unauthorized users from disabling the security of the system.

Powered by the advanced ThreatSense® technology combining speed, accuracy and minimal system impact.

## Cross-platform Protection

Eliminates malware targeting all platforms, including Windows, Mac and Linux operating systems.

Prevents malware from spreading from one platform to another.

## Low System Demands

Delivers proven protection while leaving more system resources for the server's vital tasks.

## Smooth Operation

Identification of user accounts used in infiltration attempts.

Password protected uninstallation.

Automatically excludes critical server files.

Automatically detects server roles to exclude critical server files like data stores and paging files from on-access scanning to decrease overhead.

# ESET SECURE BUSINESS



ESET Endpoint Antivirus

ESET NOD32 Antivirus Business Edition for Mac OS X

ESET NOD32 Antivirus Business Edition for Linux Desktop

ESET Endpoint Security for Android

ESET Mobile Security Business Edition

ESET File Security for Microsoft Windows Server

ESET File Security for Microsoft Windows Server Core

ESET File Security for Linux / BSD / Solaris

## ESET Endpoint Security

ESET Mail Security for Microsoft Exchange Server

ESET Mail Security for IBM Lotus Domino

ESET Mail Security for Linux/BSD/Solaris

ESET Security for Kerio

ESET Remote Administrator

See the previous and following page(s) for benefits and features of the products that are color-coded in grey.

Product features may vary depending on operating system. Please consult the individual product pages at [www.eset.com](http://www.eset.com) for specific product features.



### Antivirus and Antispyware

Eliminates all forms of threats, including viruses, rootkits, worms and spyware, keeping your network protected online and off. Optional cloud-powered scanning utilizes our reputation database for increased scanning speed and minimal false positives.

### Host-based Intrusion Prevention System (HIPS)

Provides tampering protection and protects the system registry, processes, applications and files from unauthorized modification. You can customize the behavior of the system down to every last detail and detect even unknown threats based on suspicious behavior.

### Web Control

Allows to limit access to select website categories by a way of automatic in-the-cloud classification. Create detailed rules for user groups to comply with your company policies and block sites generating high traffic volume.

### Trusted Network Detection

Lets you define trusted networks and protect all other connections with strict mode, making company laptops invisible in public Wi-Fi networks in hotels, airports and at conferences.

### Two-way Firewall

Prevents unauthorized access to company network and protects company data from exposure. Remote administration provides a firewall rule merge wizard that makes aggregating firewall rules in the network a snap.

### Client Antispam

Protects your company communications from spam and email-borne threats. Set white- and blacklists and self-learning separately for each client or group. The antispam natively supports Microsoft Outlook and also filters POP3, IMAP, MAPI and HTTP protocols.

### Device Control

Lets you block unauthorized media and devices based on pre-set rules and parameters. Set access permissions (read/write, read, block) for individual media, devices, users and groups.

### Component-based Installation

Install any or all of these security components: firewall, antispam, web control, device control, Microsoft NAP support, and web access protection. Save disk space by only installing the modules you need. You can also remotely enable/disable installed modules.

### Low System Demands

Ensure proven detection while leaving more system resources for programs you use daily. Our software also runs smoothly on older hardware, saving your time and costs of having to upgrade your endpoints.

### Multiple Log Formats

Save logs in common formats - CSV, plain text, or Windows event log for immediate analysis or harvesting. Take advantage of data being readable by 3rd party SIEM tools; RSA enVision is supported directly via a plug-in.

# ESET SECURE BUSINESS



ESET Endpoint Antivirus

ESET NOD32 Antivirus Business Edition for Mac OS X

ESET NOD32 Antivirus Business Edition for Linux Desktop

ESET Endpoint Security for Android

ESET Mobile Security Business Edition

ESET File Security for Microsoft Windows Server

ESET File Security for Microsoft Windows Server Core

ESET File Security for Linux / BSD / Solaris

ESET Endpoint Security

**ESET Mail Security for Microsoft Exchange Server**

**ESET Mail Security for IBM Lotus Domino**

**ESET Mail Security for Linux/BSD/Solaris**

**ESET Security for Kerio**

ESET Remote Administrator

See the previous and following page(s) for benefits and features of the products that are color-coded in grey.

Product features may vary depending on operating system. Please consult the individual product pages at [www.eset.com](http://www.eset.com) for specific product features.



## Antivirus and Antispyware

Eliminates all types of threats, including viruses, rootkits, worms and spyware.

Filters out email-borne threats, including spyware at the gateway level.

Provides all tools for fully-fledged server protection, including the resident shield and on-demand scanner.

Powered by the advanced ThreatSense® technology combining speed, accuracy and minimal system impact.

## Antispam

Stops spam and phishing messages with high interception rates.

Features improved antispam engine and an option to define antispam threshold scores with greater precision.

Real file type detection lets the admin apply policies for specific type of content in e-mail attachments.

## Logs & Statistics

Spam log - Displays sender, recipient, spam score, classification reason and action taken.

Greylisting log - Displays greylisted sender, recipient, action taken and status until connection denial period ends.

Give you the option to monitor the server performance in real time.

## Smooth Operation

Automatically excludes critical server files from scanning including Microsoft Exchange folders.

The built-in license manager automatically merges two or more licenses with the same customer name.

# ESET REMOTE ADMINISTRATOR

The ESET Remote Administrator tool comes standard with each version of ESET Business Solutions.

Product features may vary depending on operating system. Please consult the individual product pages at [www.eset.com](http://www.eset.com) for specific product features.

Copyright © 1992 – 2013 ESET, spol. s r. o. ESET, ESET logo, ESET android figure, NOD32, ESET Smart Security, SysInspector, ThreatSense, ThreatSense.Net, LiveGrid, LiveGrid logo and/or other mentioned products of ESET, spol. s r. o., are registered trademarks of ESET, spol. s r. o. Windows® is a trademark of the Microsoft group of companies. Other here mentioned companies or products might be registered trademarks of their proprietors. Produced according to quality standards of ISO 9001:2000.

<b>Remote Administration</b>	Manage all servers, endpoints, and even smartphones and virtual machines from a single console. Support for IPv6 infrastructure makes management of network security even easier. The comprehensive console interface lets you view all security-related events, including logs from antivirus, firewall, web control, device control and others.
<b>Real-time Web Dashboard</b>	Access web-based dashboard from anywhere for quick at-a-glance security status using live streaming of data. Customize the information displayed on the dashboard to get the most up-to-date information on the security status from the server and clients.
<b>Role-based Management</b>	Assign privileges to different remote administration users and delegate responsibilities accordingly. The built-in password strength checker and audit functionality ensure that administrator accounts are properly secured.
<b>Dynamic Client Groups</b>	Create dynamic and static client groups for easier policy enforcement and to address any pressing issues. Select from these parameters for groups: operating system, client name mask, IP mask, recent threat detected, and many more. Clients are moved automatically to the corresponding group if parameters change.
<b>Event Notifications</b>	Specify log and report parameters or choose from more than 50 templates. Have notification sent immediately or in batches based on custom threshold for security-related events.
<b>Randomized Task Execution</b>	Minimizes AV storms on virtual endpoints and reduces resource contention on networked drives. Random task execution helps offset the effect of simultaneous system scans on the network performance.
<b>Local Update Server</b>	Have all clients update from a local mirror server and minimize Internet bandwidth usage. For your mobile workforce define policies to update from ESET online servers when outside of home network. The local update server supports secured (HTTPS) communication channel.
<b>Update Rollback</b>	Revert virus signature and module updates to a known good state in case of encountering system incompatibilities. Opt to freeze updates temporarily or until manually changed.
<b>Postponed updates</b>	Opt to download from 3 specialized update servers: pre-release (beta users), regular release (regular users) and postponed release (approx. 12 hours after regular release). Apply antivirus updates to non-critical systems first, followed by critical ones with the option of clearing the update cache.
<b>Microsoft NAP Support</b>	Helps resolve compliance issues with company network access policy. You can set compliance requirements such as age of virus database, antivirus product version, protection status, availability of antivirus protection, as well as firewall status – and force database updates.